



FOR WATER HEATING APPLICATIONS

Model RA-32

Four-Chamber Tankless Electric Water Heater

Description: The RA-32 is used in demanding applications where incoming water temperatures or total flow requirements dictate more power than the RA-28. Ideal for the whole house and light commercial applications such as: offices, specialty restaurants, convenience stores, salons and pet-grooming shops. This on-demand tankless water heater is a powerful replacement for traditional tank-type heaters or for use as a booster to a traditional tank water heater or active renewable energy systems such as solar and geothermal water heating systems. The temperature activated control works effectively in re-circulating systems or in combination with tank-type heaters to supply special requirements like body spas or roman tub fillers. A minimum 200 AMP whole-house electrical service is typically required.

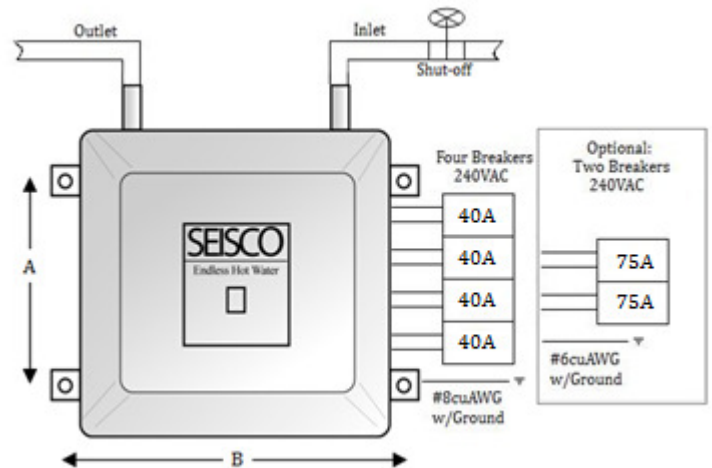
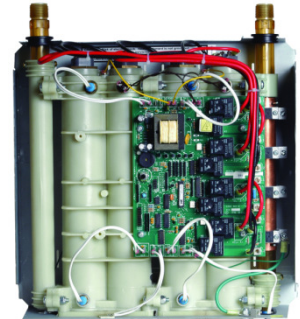
Features:

- UL 499 Listed for Water Heating Applications
- No minimum flow required for activation
- Built-in DSM Utility Integration option
- Compatible with Home Energy Management
- Very small & compact with no moving parts
- Lightweight modular construction
- Standard 3/4 inch plumbing connections with no flow restrictions
- Compatible with all plumbing designs including recirculating, tubing and manifold systems
- Microprocessor digital control
- Power sharing power control technology
- Heats continuously and only when needed
- Self-diagnostics with redundant safety devices
- High performance DuPont polymer nylon chamber material
- Built-in leak detection and alarm
- Rust & corrosion resistant

Specifications:

Heat Output (max.): **109,211 BTU**
 Power Rating (max.): **32KW**
 Voltage Rating (Nominal): **240 VAC**
 Current Rating (max.): **133 AMPS**
 Panel Load Factor (40%): **53 AMPS**
 Energy Factor: **0.99+**
 Heating Elements: **8000 watts x 4**
 Circuits Required: **4 ea. 2-wire w/ ground (#8cuAWG)**
 Breakers Required: **Four (4), double-pole**
 Breaker Size: **40 AMPS each x 4 (Optional 75 x2)¹**
 Temp. Output (dial): **90F to 130F (32C - 52C)²**

¹ Install included jumpers on control board for this option and use 2 ea 2-wire circuits w/ground #6cuAWG rated for 75AMPS.
² Temperature factory set to 120F (49C)



Flow Ratings:
Rise (°F)
@ Flow (GPM)
 109°F @ 2.0 GPM
 73°F @ 3.0 GPM
 55°F @ 4.0 GPM
 40°F @ 5.5 GPM

Rise (°C)
@ Flow (LPM)
 57°C @ 8 LPM
 46°C @ 10 LPM
 38°C @ 12 LPM
 29°C @ 16 LPM

Mounting Holes:
 A: 14 3/4" (362mm)
 B: 16 1/8" (410mm)

Dimensions:
 Weight: 23 lbs. (10.4 kg)
 Height: 15 3/4" (400mm)
 Width: 15 3/4" (400mm)
 Depth: 6 1/4" (159mm)
 Fittings: 3/4" (200mm)

Approvals:
 UL CSA NSF HUD NEC